



# Rimses Planning

**Rimses**  
Maintenance Solution  
**inetum**

## The right work, at the right time, with the right people

Does your company already have a maintenance planning policy in place? Do you have the right tools to carry it out? Do you know your maintenance planning schedule for the coming months?

Studies have shown that too few companies have a maintenance planning policy in place. But it is clear that good planning is the best basis for effectively managing your maintenance needs and implementing a proactive policy, which in turn improves your asset performance. Effective planning reduces downtime, lowers costs, and helps you increase production capacity and improve quality.

With Rimses Planning, we offer you the right tools for planning your maintenance work within the framework of the Maintenance Management System. The planning system takes into account the availability of your employees, materials, work tools and, last but not least, the measures needed to safely carry out the work at hand.

### Work preparation: the basis of every planning

Work preparation lies behind the various conditions that you enter into the system and which must be taken into account when planning the maintenance activities:

- **Timing:** Do systems need to be shut down to carry out the maintenance activities? What timing is possible and desirable for carrying out maintenance?
- **Materials:** Which spare parts and replacement parts are needed to carry out the scheduled maintenance activities?
- **People:** Who has the right expertise, internally or externally, to successfully carry out the scheduled maintenance activities?
- **Safety requirements:** Does the installation first have to be secured with Lockout-Tagout? Is the required work permit available? Does safety have to be validated before the start of the work activities?

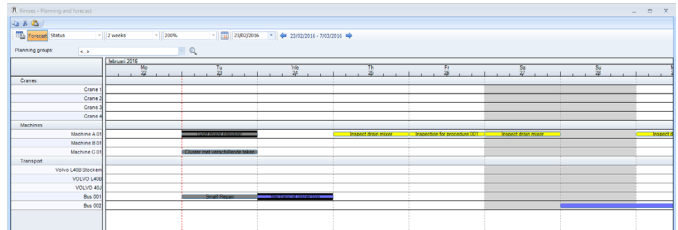
Rimses allows you to quickly and easily integrate all this information into the work order to ensure that it is also available when planning the work activities. Rimses proactively provides information on the availability of employees and materials and checks whether the work may be carried out.

### Plan your work easily on a weekly or daily basis

The graphical planning board allows you to see at a glance which work needs to be done per department, shift, production installation, priority, discipline, etc.

You can easily and quickly assign the work that needs to be carried out to one or more maintenance employees by simply dragging the work order from the list to the planning board. This immediately shows you the capacity utilization and allows for further optimization.

Rimses also immediately displays any employee absences and warns you accordingly if you try to assign work to them. Color markings indicate the work activities that require your attention and the degree of completion of the scheduled work.





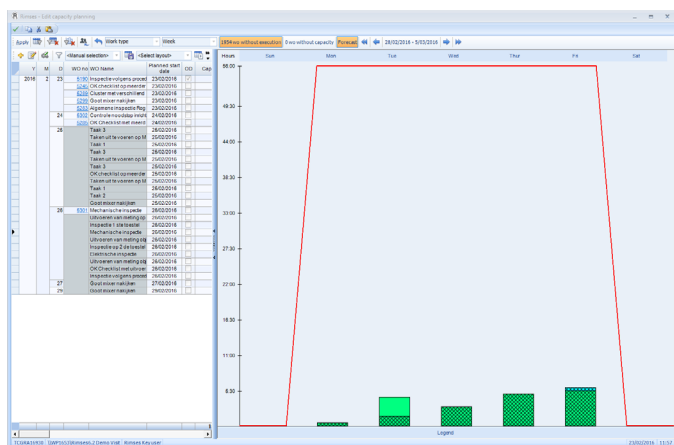
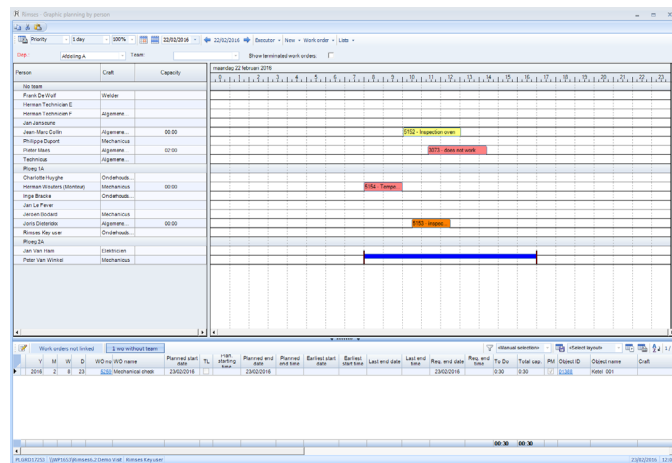
In short, it enables you, as the person responsible for maintenance, to optimize the distribution and scheduling of the necessary work on a daily and weekly basis. But the planning board offers you even more options. It is also an interactive communication tool with the maintenance employees and the production employees. They can consult the board to see how the work is progressing.

## Obtain insight into capacity utilization

Once you get a taste of planning, you will of course want more. You will also want to obtain long-term insight into the work that needs to be done. If you carry out proper work preparation and also schedule preventive maintenance, Rimses will already know a great deal about the future work.

Using the graphical capacity planning tool, you can also add the capacity available from your departments and/or teams. This immediately shows you when and where you may have a potential capacity shortage and may therefore need to call in assistance from service partners.

You can also immediately display the other work for the asset group down to the level of individual assets. With the planning board, you can change the dates of work orders and prognoses and adjust the planning accordingly.



This planning tool is also a simulation tool and allows you to explore various planning options for future work activities based on the preventive maintenance and to evaluate their impact.

Such a simulation makes it easy to implement your long-term planning: with a simple click, you can then transfer the overall planning to the actual planning dates.

## Schedule maintenance that can be planned in advance

Would you like to know when the next round of maintenance activities is scheduled? With the planning board for preventive maintenance, you can choose all the planned maintenance, on the basis of work orders and/or prognoses, for each group of assets up to a year beforehand.

## The advantages in a nutshell

- **Simple:** Using drag and drop, you can assign maintenance employees to the work in question and receive immediate confirmation that the work is feasible.
- **Easy to follow:** Color codes help you to focus on priorities, the progress of the work at hand, and qualifications.
- **Better collaboration:** The planning boards facilitate cooperation between production employees, the maintenance department, and technicians.
- **More margin and flexibility:** Improved preparation, planning, and cooperation result in better solutions and performance of your assets.

**INTERESTED?**  
 Visit our website [www.rimses.com](http://www.rimses.com)  
 or contact us on [inforimses@inetum-realdolmen.world](mailto:inforimses@inetum-realdolmen.world).